

UXL60-12



Ultracell UK LTD © 2013 www.ultracell.co.uk

Physical Specification

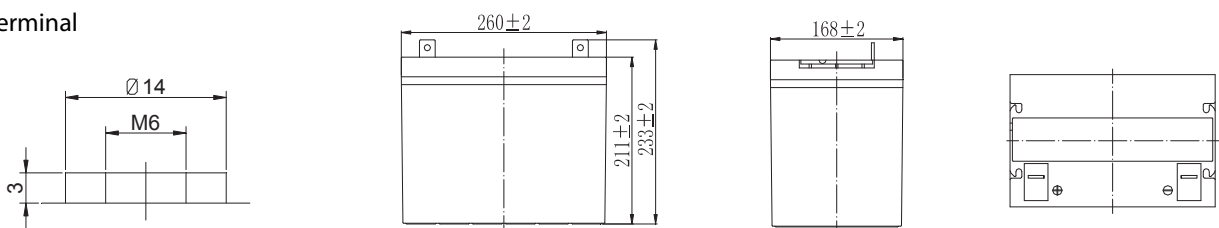
Part Number:	UXL60-12
Length:	260 ± 3 mm (10.24 inches)
Width:	168 ± 3 mm (6.61 inches)
Container Height:	211 ± 3 mm (8.26 inches)
Total Height (with terminal):	214 ± 3 mm (8.50 inches)
Approx Weight:	Approx 19.2 Kg

Specifications

	Nominal Voltage	12V	
	Nominal Capacity (10HR)	60AH	
Terminal Type	Standard Terminal	F6	
	Optional Terminal	F9 / F14	
Container Material	Standard Option	ABS	
	Flame Retardant Option (FR)	ABS (UL94:VO)	
Rated Capacity	64.2 AH/3.21A	(20hr,1.80V/cell, 25°C / 77°F)	
	60.0 AH/6.0A	(10hr,1.80V/cell, 25°C / 77°F)	
	52.5 AH/10.44A	(5hr,1.75V/cell, 25°C / 77°F)	
	46.8 AH/15.6A	(3hr,1.75V/cell, 25°C / 77°F)	
	37.2 AH/37.2A	(1hr,1.60V/cell, 25°C / 77°F)	
Max Discharge Current	600 A (5s)		
Internal Resistance	Approx 7mΩ		
Discharge Characteristics	Operating Temp. Range	Discharge: -15 ~ 50°C (5 ~ 122°F)	
		Charge: -10 ~ 50°C (32 ~ 104°F)	
		Storage: -20 ~ 50°C (5 ~ 104°F)	
	Nominal Operating Temp. Range	25 ± 3°C (77 ± 5°F)	
	Cycle Use	Initial Charging Current less than 18.0A. Voltage 14.50V ~ 14.90V at 25°C (77°F) Temp. Coe ffcient -30mV/°C	
	Standby Use	No limit on Initial Charging Current Voltage 13.5V ~ 13.8V at 25°C (77°F) Temp. Coe ffcient -18 mV/°C	
Capacity affected by Temperature	40°C (104°F)	103%	
	25°C (77°F)	100%	
	0°C (32°F)	86%	
Design Floating Life at 20°C	15 Years		
Self Discharge	Ultracell batteries may be stored for up to 6 months at 25°C(77°F) and then a refresh charge is required. For higher temperatures the time interval will be shorter.		

Dimensions

F6 Terminal



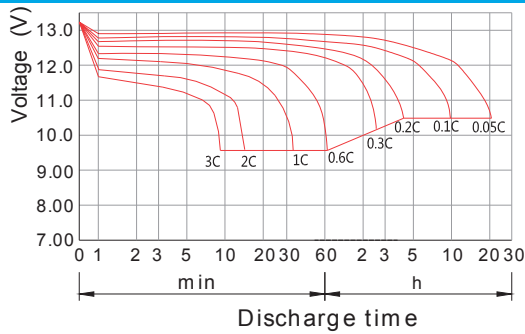
Constant Current Discharge (Amperes) at 25 °C (77°F)

F.V/TIME	10min	15min	30min	60min	2h	3h	4h	5h	8h	10h	20h
9.60V	122	97.0	58.8	37.2	21.9	15.3	12.5	10.7	7.34	6.11	3.21
9.90V	119	94.7	57.6	36.6	21.8	15.2	12.5	10.6	7.30	6.10	3.20
10.2V	114	91.2	55.9	35.7	21.6	15.1	12.4	10.6	7.25	6.08	3.19
10.5V	109	88.1	54.5	35.0	21.3	15.0	12.3	10.5	7.20	6.04	3.17
10.8V	103	83.4	52.5	33.9	20.7	14.6	11.9	10.2	6.98	6.00	3.15

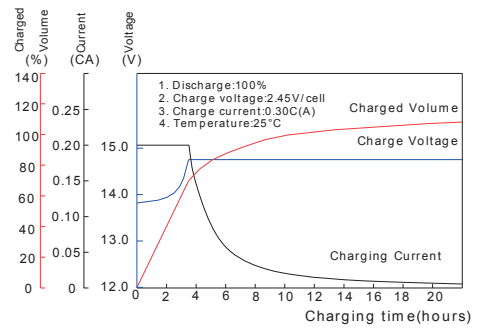
Constant Power Discharge (Watts) at 25 °C (77°F)

F.V/TIME	10min	15min	30min	60min	2h	3h	4h	5h	8h	10h	20h
9.60V	1320	1065	660	424	254	180	148	127	87.2	72.9	38.5
9.90V	1280	1040	647	418	252	179	147	126	86.7	72.8	38.4
10.2V	1228	1001	627	407	250	178	146	125	86.1	72.6	38.3
10.5V	1175	967	612	399	246	176	145	124	85.5	72.1	38.1
10.8V	1109	916	589	387	240	171	140	120	83.0	71.6	37.8

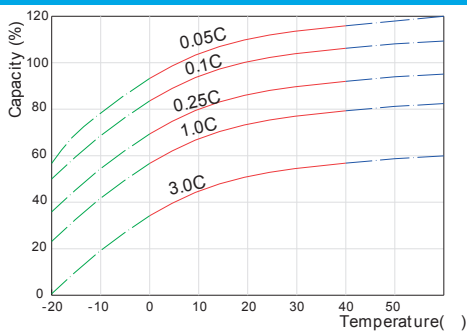
Discharge Characteristics



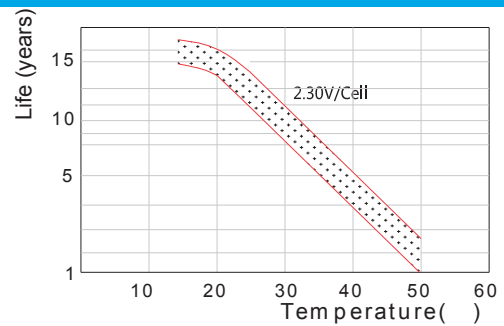
Float Charging Characteristics



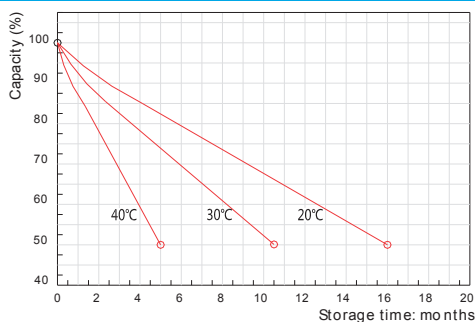
Temperature Effects in Relation to Battery Capacity



Effect of Temperature on Long Term Float Life



Self Discharge Characteristics



Cycle Life on D.O.D(25)

