

### UXL65-12



### Physical Specification

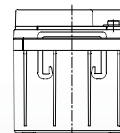
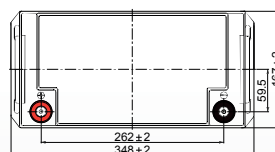
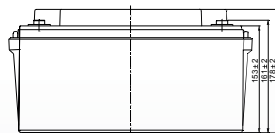
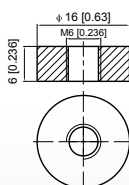
Part Number:	<b>UXL65-12</b>
Length:	<b>348 ± 2 mm (13.70 inches)</b>
Width:	<b>167 ± 2 mm (6.57 inches)</b>
Container Height:	<b>178 ± 2 mm (7.01 inches)</b>
Total Height (with terminal):	<b>178 ± 2 mm (7.01 inches)</b>
Approx Weight:	<b>Approx 20.50kg</b>

### Specifications

	Normal Voltage	12V
	Normal Capacity (20HR)	65.0AH
<b>Terminal Type</b>	Standard Terminal	F6
	Optional Terminal	-
<b>Container Material</b>	Standard Option	ABS
	Flame Retardant Option (FR)	ABS(UL94:VO)
<b>Rated Capacity</b>	67.4 AH/3.48A	(20hr, 1.80V/cell, 25°C / 77°F)
	65.0 AH/6.50A	(10hr, 1.80V/cell, 25°C / 77°F)
	55.5 AH/11.3A	(5hr, 1.75V/cell, 25°C / 77°F)
	49.8 AH/16.9A	(3hr, 1.75V/cell, 25°C / 77°F)
	41.8 AH/40.3A	(1hr, 1.60V/cell, 25°C / 77°F)
<b>Max Discharge Current</b>	780A (5s)	
<b>Internal Resistance</b>	Approx 7.3mΩ	
<b>Discharge Characteristics</b>	Operating Temp. Range	Discharge: -15 ~ 50°C (5 ~ 122°F)
		Charge: 0 ~ 40°C (5 ~ 104°F)
		Storage: -15 ~ 40°C (5 ~ 104°F)
	Nominal Operating Temp. Range	25 ± 3°C (77 ± 5°F)
	Cycle Use	Initial Charging Current less than 19.50A. Voltage 14.4V ~ 15.0V at 25°C (77°F) Temp. Coefficient -30mV/°C
	Standby Use	No limit on Initial Charging Current Voltage 13.5V ~ 13.8V at 25°C (77°F) Temp. Coefficient -20mV/°C
Capacity affected by Temperature	40°C (104°F) 103%	
	25°C (77°F) 100%	
	0°C (32°F) 86%	
<b>Design Floating Life at 20°C</b>	15 Years	
<b>Self Discharge</b>	Ultracell batteries may be stored for up to 6 months at 25°C(77°F) and then a refresh charge is required. For higher temperatures the time interval will be shorter.	

### Dimensions

#### F6 Terminal



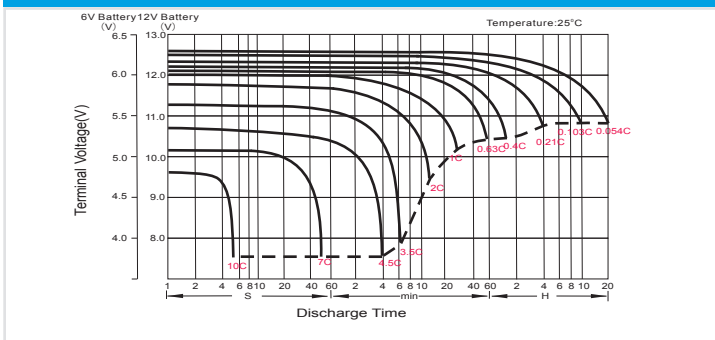
### Constant Current Discharge (Amperes) at 25°C (77°F)

F.V/Time	5min	10min	15min	20min	30min	45min	1h	2h	3h	4h	5h	6h	8h	10h	20h
1.85V/cell	141.6	105.7	90.0	76.6	57.5	42.7	34.6	20.9	15.6	12.5	10.5	9.10	7.70	6.40	3.43
1.80V/cell	175.5	125.2	101.9	84.2	62.0	45.5	36.7	21.9	16.1	12.9	10.8	9.46	8.13	6.74	3.54
1.75V/cell	195.8	136.1	108.7	88.7	65.0	47.6	38.3	22.6	16.6	13.3	11.1	9.7	8.26	6.83	3.60
1.70V/cell	211.4	146.6	114.9	92.8	67.1	49.4	39.5	23.2	17.0	13.6	11.3	9.9	8.39	6.90	3.65
1.67V/cell	226.2	153.7	119.6	96.3	69.4	51.0	40.7	24.0	17.4	13.9	11.6	10.2	8.48	6.98	3.68
1.60V/cell	240.2	161.9	124.0	99.5	71.8	52.3	41.8	24.5	17.8	14.2	11.8	10.4	8.56	7.05	3.71

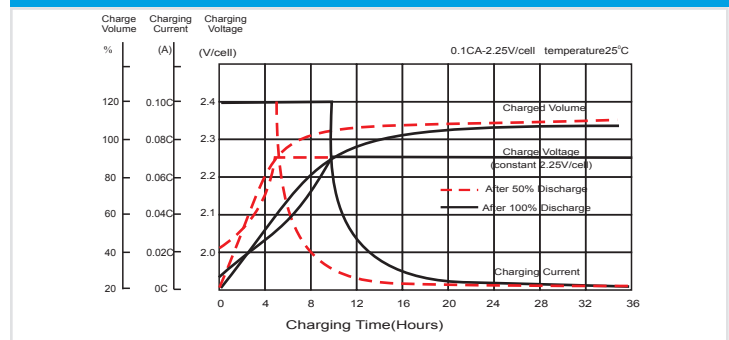
### Constant Power Discharge (Watts) at 25°C (77°F)

F.V/Time	5min	10min	15min	20min	30min	45min	1h	2h	3h	4h	5h	6h	8h	10h	20h
1.85V/cell	262.9	198.5	170.7	146.6	110.6	82.8	67.6	41.0	30.8	24.9	20.9	18.2	15.5	12.9	6.91
1.80V/cell	322.9	233.3	192.2	160.4	119.0	87.9	71.4	42.8	31.8	25.5	21.5	18.9	16.3	13.5	7.12
1.75V/cell	356.3	251.8	203.8	168.1	124.2	91.6	74.2	44.2	32.6	26.2	21.9	19.3	16.5	13.7	7.21
1.70V/cell	380.5	268.7	214.2	174.9	127.6	94.8	76.3	45.2	33.3	26.7	22.4	19.7	16.7	13.8	7.29
1.67V/cell	402.6	279.1	221.2	180.4	131.3	97.3	78.3	46.5	34.1	27.3	22.9	20.1	16.8	13.9	7.33
1.60V/cell	420.4	290.3	227.0	184.8	134.9	99.5	80.2	47.4	34.7	27.7	23.3	20.5	16.9	14.0	7.38

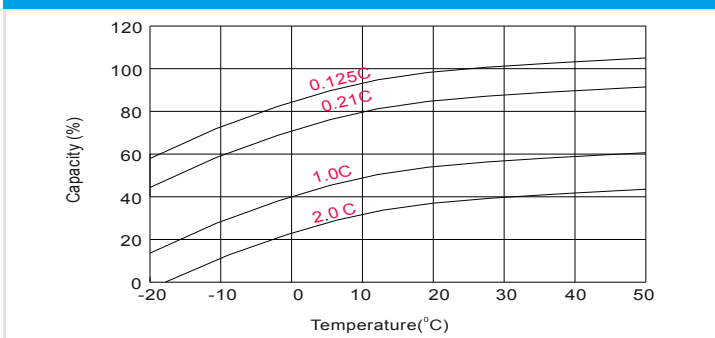
### Discharge Characteristics



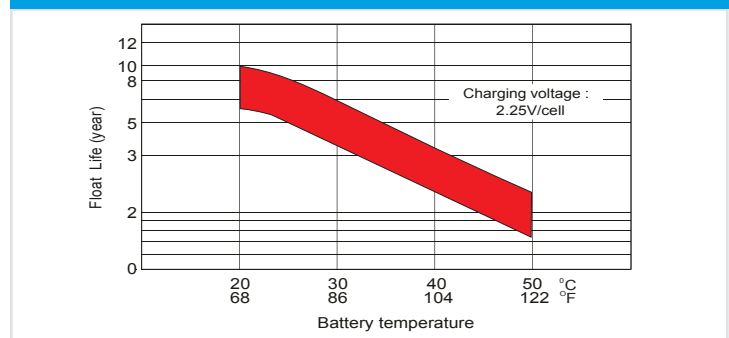
### Float Charging Characteristics



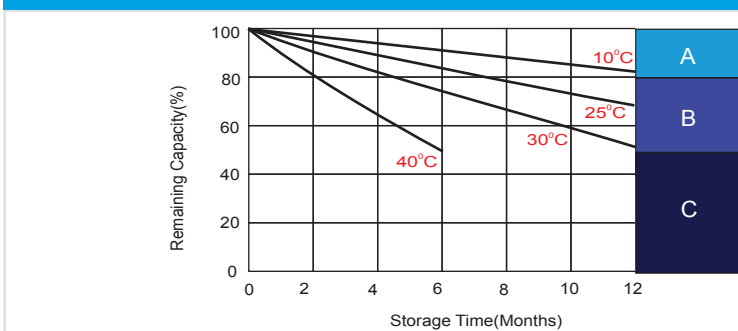
### Temperature Effects in Relation to Battery Capacity



### Effect of Temperature on Long Term Float Life



### Self Discharge Characteristics



- A** No supplementary charge required  
(Carry out supplementary charge before use if 100% capacity is required.)
- B** Supplementary charge required before use. Optional charging way as below:  
1. Charged for above 3 days at limited current 0.25CA and constant voltage 2.25V/cell.  
2. Charged for above 20 hours at limited current 0.25CA and constant voltage 2.45V/cell.  
3. Charged for 8~10 hours at limited current 0.05CA.
- C** Supplementary charge may often fail to recover the capacity.  
The battery should never be left standing till this is reached.